



THE ITALIAN PAVILION

at **CONEXPO-CON/AGG**

North America's Largest Construction Trade Show 2020



UCoMESA
UNIONE COSTRUTTORI
MACCHINE EDILI STRADALI,
MINERARIE ED AFFINI



ANIMA
CONFINDUSTRIA
MECCANICA VARIA



Ministry of Foreign Affairs
and International Cooperation



ITALIAN TRADE AGENCY





ITALIAN TRADE AGENCY

ITA - Italian Trade Agency is the Governmental agency that supports the business development of our companies abroad and promotes the attraction of foreign investment in Italy. With a motivated and modern organization and a widespread network of overseas offices, ITA provides information, assistance, consulting, promotion and training to Italian small and medium-sized businesses. Using the most modern multi-channel promotion and communication tools, it acts to assert the excellence of Made in Italy in the world.

BOOTH #S5172

ITALIAN TRADE AGENCY

777 Post Oak Blvd - Suite 320, Houston - TX - 77056

T. +1 (281) 888 4288 / F. +1 (281) 974 3100 www.ice.it – houston@ice.it

Director: Antonietta Baccanari





Unacea is the Italian association for construction equipment, representing both multinational firms and a large group of SMEs with a very high rate of internationalization. Unacea is the Italian member of CECE, the European committee for construction equipment based in Brussels, representing around 1,200 companies that employ 130,000 people directly, with a turnover of €25 billion.

UNACEA – Italian Construction Equipment Association

Via Antonio Salandra, 18 - 00187 Roma

T. +39 06 42272213 – F. +39 06 42274000

www.unacea.org – unacea@unacea.org



UCoMESA
UNIONE COSTRUTTORI
MACCHINE EDILI, STRADALI,
MINERARIE ED AFFINI

MEMBER OF



ANIMA
CONFINDUSTRIA
MECCANICA VARIA



UCoMESA - Italian Association of Construction Equipment Manufacturers
Created in 1951 within ANIMA, Ucomesa gathers the most qualified, major Italian manufacturers of construction equipment and machinery.

Ucomesa members are distributed into the following six product groups: Excavation, drilling, boring and pile driving equipment; Aggregate processing equipment; Concrete production, transport and pouring equipment; Tower cranes; Road construction equipment; Prefabrication, materials testing, construction materials production, etc.

Ucomesa is particularly focused on matters related to export and carries on either directly or in co-operation with ITA/ICE Agency promotional activity which includes participation in several trade fairs both in Italy and abroad.

UCoMESA/ANIMA

Italian Association of Construction Equipment Manufacturers

Via Scarsellini, 13 - 20161 Milano (Italy)

T. +39 02 45418532 – www.ucomesa.it – ucomesa@anima.it

ITALIAN PAVILION

	Booth
BATMATIC	S - 5276
CMB ATTACHMENTS	S - 5176
EDIL EUGANEA	S - 5272
EMILIANA SERBATOI	S - 5273
FM GRU	S - 5174
GBM SHORING AND SCAFFOLDING	S - 5171
G.F. GORDINI	S - 5271
HBS VALVES & HYDRAULIC COMPONENTS	S - 5173
IDROMECCANICA ITALIANA	S - 5172
MEDIAPOINT & EXHIBITIONS	S - 5172
NERON PUMPS	S - 5278
OUTSET ADVANCED ON BOARD TECHNOLOGY	S - 5280
WREKO	S - 5274



ITALIAN PAVILION MAP

S - 5172



ITALIAN TRADE AGENCY




S - 5174



S - 5176



MAKE YOUR WORK EASY

S - 5272



Fast Protak Everywhere

S - 5274



ADVANCED SOLUTION TOOLS

S - 5276



S - 5278



S - 5280



ADVANCED ON BOARD TECHNOLOGY



S - 5171



S - 5173



S - 5271



ADVANCED FUEL SOLUTIONS

S - 5273

BATMATIC

Via Romitaggio 31
43010 Bianconese di Fontevivo (Parma)
Italy

www.batmatic.com

batmatic

Contact:

Andy Pighi

andypighi@batmatic.com

+39 337 1619250

Batmatic, since 1971, produces high quality light compaction equipment in Italy.

Batmatic offers a complete range of compaction equipment for all soils and pavements, including forward and reversible plate compactors, walk behind rollers, tamping rammers and stonecutters. Nearly 50 years of constant research in compaction technologies, are a guarantee for avant-garde products capable to satisfy all customers requirements. Each machine is developed for maximum performance, productivity and durability.

Batmatic has attained an important position in the compaction sector, confirming its presence in the Italian and international markets.

FP1342W

FP2150W

CV70H

CR5070

CR570

CR2140

VR22E

VR22H

Ready in All Directions

MADE IN ITALY

www.batmatic.com

www.batmatic.com

CMB ATTACHMENTS



Contact:

Luca Zampieri

l.zampieri@cmbattachments.com

+39 320 2626769

CMB S.r.l. Via del Lavoro 4/6
36020 Asigliano Veneto (VI)
Italy

www.carpcmb.com

CMB S.r.l. is an Italian Company specialized in the design and manufacture of hydraulic attachments for excavators and loaders. CMB S.r.l. produces three line of equipment: Demolition, Forestry and Handling equipment. With its experience, advanced technology and outstanding manufacturing strength, CMB S.r.l. offers decisive advantages, high performance and reliability.



EDIL EUGANEA

Via Enzo Ferrari 15
35046 Borgo Veneto (PD)
Italy

www.edileuganea.com



EDIL EUGANEA®
Fast Prefab Everywhere

Contact:
Fabio Poletto
edileuganea@edileuganea.it
+39 0429 841270

Construction of insulated prefabricated facilities (such as accommodations for construction sites, labor camps, army, living apartments); sanitary modules, schools, clinics, kiosks, security cabins; special containers and transformed naval containers; soundproof booths.



EMILIANA SERBATOI



Largo Maestri del lavoro 40
41011 Campogalliano (MO)
Italy

www.emilianaserbatoi.com

Contact:

Giulio Guastalli

info@emilianaserbatoi.it

+39 340 2348275

Tanks and advanced fuel solutions designed to provide a prompt and cost-effective on-site response for fuel handling: Emiliana Serbatoi, based in Campogalliano (Modena) Italy, is able to support every single personal and professional activity, as earth-moving sector. The company is an independent manufacturer of tanks, devices and systems for storage, transport and delivery of petroleum products – like fuels – and liquids in general.

Servicing diverse areas as construction, agriculture, oil & gas sectors, automotive, transport field, marine, aviation, food, industrial and client rapid response needs since its founding in 1983, Emiliana Serbatoi has gained a reputation as the leader in the design, production, supply of fueling systems to clients and customers in both the European and global markets. Emiliana Serbatoi has the appropriate competence, the technical knowledge, a skilled team and the right formula to overcome new obstacles and expand its leadership.

THE WIDE RANGE OF TANKS BY THE ITALIAN COMPANY EMILIANA SERBATOI



THE TRANSPORTABLE TANK «CARRYTANK PICK-UP» BY EMILIANA SERBATOI



FM GRU

Via Emilia 11
29010 Pontenure
Italy

www.fmgru.com



Contact:

Sig. Giacomo Fuochi

info@fmgru.com

+39 335 7152180

FMGru was established in 1920 and after years of work in the welded metallic carpentry sector, in the '60s started the manufacturing of cranes, becoming a leading company in this field. With our long experience in this branch, we are able to offer a product made in Italy, built with high quality raw materials and we can guarantee an excellent after-sale service. Our range of cranes covers different sites' needs. We produce: RBI hydraulic self-erecting cranes, easy to assemble, install and use (they have a great versatility with jibs from 15 to 40meters); TLX Flat Top Tower Cranes with jibs from 15 to 80 meters (their main advantages are the modularity and the easy and quick speed of assembly); LK Luffing Cranes for the most congested building sites with hydraulic jib from 36 to 52 meters (their mounting is quick and easy, as the hydraulic piston is pre-installed at the factory).



GBM SHORING AND SCAFFOLDING



Via Alessandro Volta, 1
25024 Porzano di Leno
Italy

Contact:

Sandro Goffi

info@gbmitaly.com - s.goffi@gbmitaly.com

+39 030 9067005

www.gbmitaly.com

G.B.M. BUILDING EQUIPMENT has been producing scaffolding systems, props and building equipment for more than 60 years, always innovating and looking for the most effective and efficient solutions for the building site. The success of GBM has been built during the decades by its ability to design, manufacture and supply products conforming to national and international certifications, according to its customer's and building site requirements.

The large range of GBM products and its flexibility offer the customer solutions for standard and customized applications. GBM can provide you all type of props, classified into: light props, DIN EN 1065 props, pull-push props, fork-head props, aluminium props and shoring towers. GBM scaffoldings have been used for several years across the world for construction and maintenance works. GBM range of scaffoldings includes bushing-type scaffoldings, pin-type scaffoldings and pipe-coupling scaffoldings.



G.F. GORDINI

Via E. Mattei, 4
48012 Bagnacavallo (Ra)
Italy

www.gfgordini.com



Contact:

Matteo Gordini

sales@gfgordini.com

+39 331 1611437

GF Gordini designs and produces, since 1985, hydraulic attachments for different types of machines: Skid-Steer Loaders, Wheel Loaders, Excavators, Backhoe Loaders, Telescopic Handler, etc.. Attachments like cold planer, wheel trencher, forestry mulcher, leveling grader, sweeper, and many others are part of a full range of attachments that can satisfy all customer requests.

GF Gordini was born as a family company and now, after more than 30 years in the market, exports in almost all countries of the world with dealers and importers. It reflects the typical Italian quality in terms of procedure of manufacture and in terms of quality of components.



HBS VALVES & HYDRAULIC COMPONENTS



Via Mastroppa, 4/6
46040 Monzambano (Mantova)
Italy

www.hbs.it

Contact:

Bompieri Rinaldo

customerservice@hbs.it

+39 335 6936304

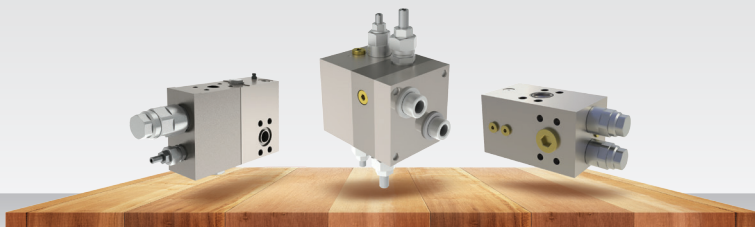
Since 1967 HBS Group operates in the production and marketing of hydraulic and electromechanical components. The constant search for technical solutions, the constant improving the quality of product and process, in addition to the efficiency and flexibility of the production allow HBS to the continued success in the global market.

Hydraulic valves, hydraulic swivel joints, slip rings, solenoid operated valves, continuous duty coil, connectors, special products. HBS is your partner for the development and supply of hydraulic components and electromechanical.

HYDRAULIC SWIVEL JOINTS & SLIP RING



VALVES & HYDRAULIC COMPONENTS



IDROMECCANICA ITALIANA

Via Antichi Pastifici, 2
70056 Z. Ind. Lotto A1/A2 Molfetta
Italy

www.idromeccanica.com



Contact:

Pasquale Marrone

info@idromeccanica.com

+39 347 2819280

AEM member company. For 40 years we have been manufacturing the most reliable 100% Made in Italy demolition & recycling Attachments for Earthmoving machinery. Hydraulic breakers/hammers for miniexcavators , skid steers, backhoe loader and excavators up to 50 tons, quick hitches, top brackets, shears, pulverizers, crushers, screening buckets, selection grabs, buckets, rippers, plate compactors and pile drivers. Rock breakers available with automatic greasing devices, in silenced and underwater versions. All of our products are fully TESTED. Over 6000 perfectly Interchangeable/replacement spare parts for worldwide brands of hydraulic breakers are daily available in our list. Parts upon drawings and samples. Parts stocked in USA warehouse. Made in Italy, worldwide approved!

Attachments

Spare parts

shop.idromeccanica.com
Visit us at
FESTIVAL HALL
Booth #F100823

Idromeccanica Italiana s.r.l. • U.S.A. - Tel. 1-516 5906373 • ITALY - Tel. +39 347 281 92 80



Contact:

Dr Fabio Potestà

info@mediapointsrl.it

+39 010 5704948

MEDIAPOINT & EXHIBITIONS

Corso Buenos Aires, 8 - Corte Lambruschini
16129 Genova
Italy

www.mediapointsrl.it

Mediapoint & Exhibitions is an international media and trade exhibitions representative and also organizer of Pipeline & Gas Expo - The Utility Construction Show, GIC - Italian Concrete Days 2020 and GIS lifting, Handling and Heavy Transport Show.

MEDIAPOINT & EXHIBITIONS SRL



**INTERNATIONAL AND ITALIAN
TRADE MAGAZINES
AND B2B EXHIBITIONS**

29-31 October 2020 - Piacenza, Italy



ITALIAN CONCRETE DAYS

www.gic-expo.it

Pipeline & Gas Expo
20-22 May 2020 - Piacenza, Italy



www.pipeline-gasexpo.it

7-9 October 2021 - Piacenza, Italy



**The Lifting, Industrial & Port Handling
and Heavy Transport Show**

www.gisexpo.it

NERON PUMPS

Via Locatelli 13
24020 Ranica
Italy

1712 Pioneer Ave
Cheyenne 82001
USA



www.neron.it

Contact:

Mrs Annamaria Bertocchi

neronanna@neron.it - neronnorthamerica@neron.it

+39 348 2643868

Thanks to his patent neron pumps can produce a unique high pressure washer hydraulically driven. The pumps are self priming, have integrated hydraulic motor, have built in unloader, have direct flow and safety devices. The pumps can be used with any liquid, fresh water, salt water, glycole, methanol. The 100 bar model can be used for dust suppression, the 200 bar model for cleaning and the 800 bar model can be used for heavy duties. The neron pumps can be applied in any mobile machine as concrete pumps, concrete mixers, sweepers, drilling machines, pavers, vessels, fishing boats garbage collectors, mining machines, asphalt machines, road service trucks tractors, trenchers, railway service machines, fire fighting machines, rovs and many more! Subsea pumps and atex pumps are available for your special needs, call us and we will be glad to serve you.

A large graphic advertisement for Neron Pumps. The background is a blue, wavy, liquid-like texture. In the center, a large, detailed image of a yellow and black hydraulic pump is shown. Surrounding this central pump are several smaller images of various industrial and construction vehicles, including excavators, trucks, and boats, all connected by a dotted line. The text "HYDROCLEANERS" and "HYDRAULIC DRIVEN PUMPS" is prominently displayed at the top in bold, white, sans-serif font. Below this, the phrase "little, powerful, noiseless, cost effective" is written in a smaller, italicized font. At the bottom, the Neron Pumps logo is on the left, and the text "HIGH PRESSURE WASHING, EVERYWHERE, IN SAFETY CONDITION" is on the right.

HYDROCLEANERS
HYDRAULIC DRIVEN PUMPS

little, powerful, noiseless, cost effective

NERON PUMPS

**HIGH PRESSURE WASHING,
EVERYWHERE, IN SAFETY CONDITION**

OUTSET ADVANCED ON BOARD TECHNOLOGY



Via Pacinotti n. 9
36066 Sandrigo (VI)
Italy

www.outset.it

Contact:

Luca Toneatti

luca@outset.it

+39 366 6333102

Outset Srl (Vicenza North Italy) with more than twenty years of experience is the ideal partner for the most modern on-board weighing for commercial vehicles, earthmoving machines, mining and logistic vehicles granting a precise and efficient weighing while loading. We produce a wide range of technologically advanced instruments that optimize loads and allow to payload within the law limits avoiding vehicles overload. All weighing data and individual reports can be transmitted via GPS/Telematics or printed out to ensure continuous updating and management of the loading activity. Today, Outset operates in Europe and in many other Countries and makes constant, significant investments in R&D to improve its products and develop new, innovative instruments that incorporate the best new technology while maintaining its main distinguishing user friendly characteristic. Outset has an extensive network of authorized sales and intends to continuously expand them by searching new partners all over the world.



WREKO

Via Rovigo 21
35042 Este
Italy

www.wreko.com



Contact:

Piero Pomaro - CEO
export@wreko.com
+39 0429 1760794

Wreko is a new player in the earthmoving attachment industry born in Italy, founded by more than 20 years experience professionals. The company produce customized solutions with highest quality at reasonable price all 100% made in Italy in the process to open a US warehouse and service center. The main products are:

- Selector grab with innovative rotation ideal in moving and demolition
- Peel grab for moving and recycling industry,
- the most demanded demolition tools Rotating pulverizer, Multi processor with interchangeable jaws
- Scrap shears the perfect tool for cutting steel in various situation.
- Heavy duty buckets and High tilt bucket for special applications
- Forestry equipment such as Tree cracker and shears for cutting and moving log and wood.

This is however an incomplete list of work tools and if you have something special to manufacture we will engineer, design and produce.



NOTES





HOUSTON

777 Post Oak Blvd
Suite 320
Houston, TX 77056
T. +1 281 888 4288
F. +1 281 974 3100
houston@ice.it

CHICAGO

401 N. Michigan Avenue
Suite 1720
Chicago, IL 60611
T. +1 312 670 4360
F. +1 312 670 5147
chicago@ice.it

MIAMI

1 SE 3rd Avenue
Suite 1000
Miami, FL 33131
T. +1 305 461 3896
F. +1 786 497 8900
miami@ice.it

LOS ANGELES

1900 Avenue of the Stars
Suite 350
Los Angeles, CA 90067
T. +1 323 879 0950
F. +1 310 203 8335
losangeles@ice.it

NEW YORK

33 East 67th Street
New York, NY 10065
T. +1 212 980 1500
F. +1 212 758 1050
newyork@ice.it

ROME

Via Liszt, 21
00144 Rome, Italy
T. +39 06 59921
F. +39 06 89280353
urp@ice.it

www.ice.it

